

# the Onyx

1665  
sq. ft.

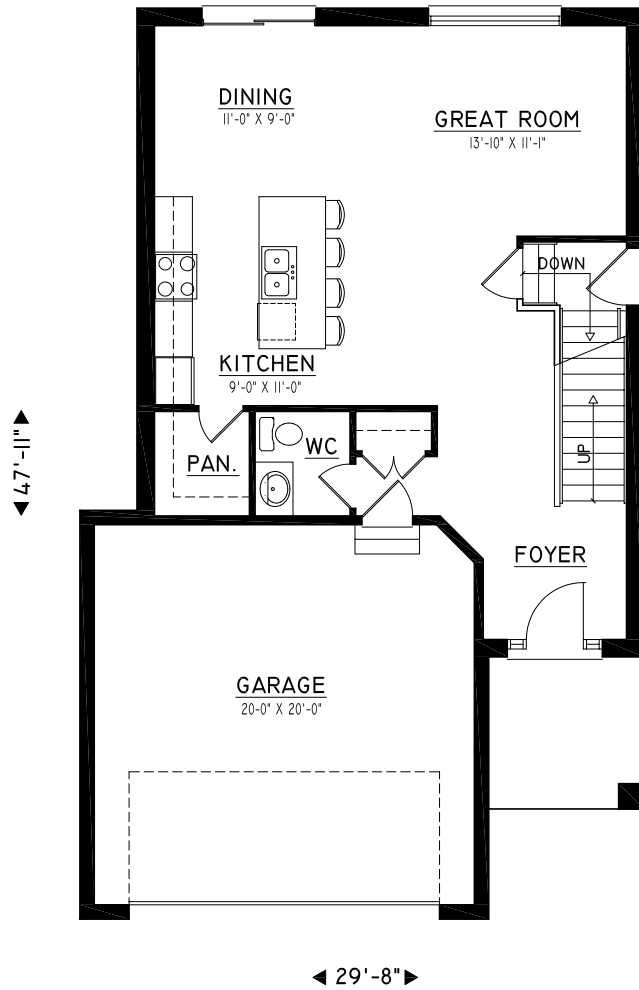


For more information call  
MICHAEL BOSVELD  
519 438 5478  
mbosveld@nuvistarealty.ca

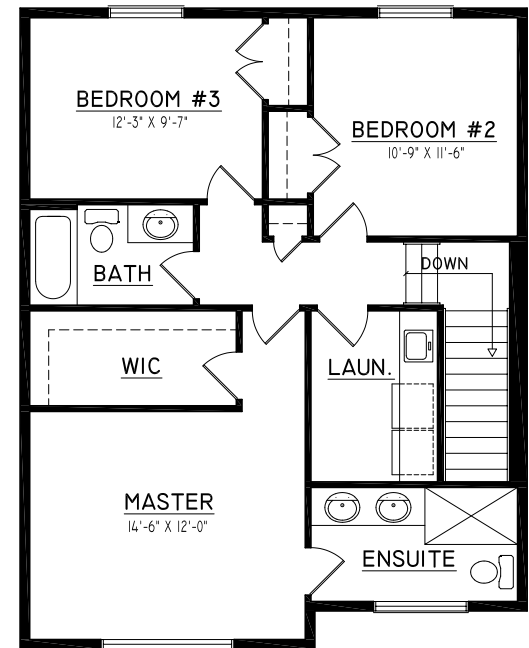


the Onyx

1665  
sq. ft.



**MAIN FLOOR PLAN**  
TOTAL APPROX. - 788 SQ. FT.



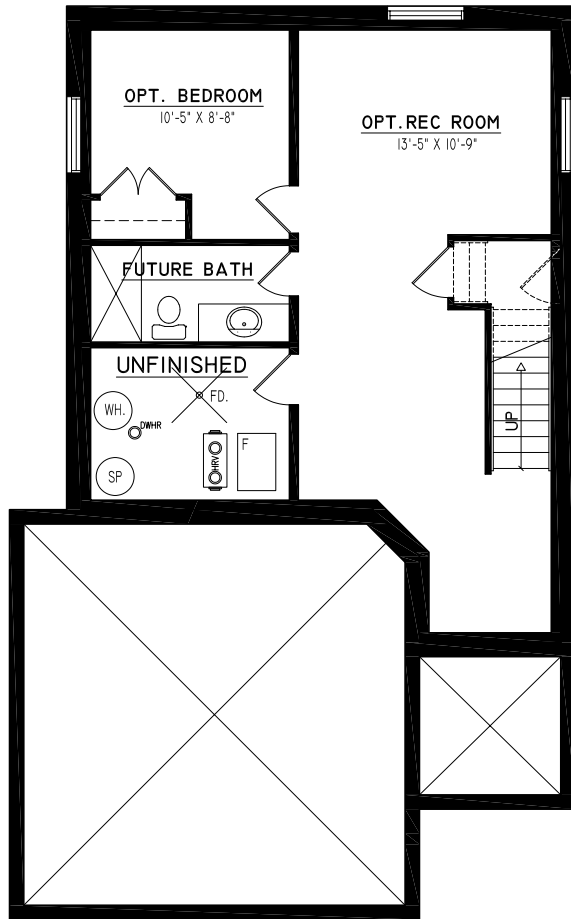
**SECOND FLOOR PLAN**  
TOTAL APPROX. - 877 SQ. FT.

For more information call  
MICHAEL BOSVELD  
519 438 5478  
mbosveld@nuvistarealty.ca



the Onyx

1665  
sq. ft.



**BASEMENT PLAN**

FINISHED AREA APPROX. - 554 SQ. FT.

For more information call  
MICHAEL BOSVELD  
519 438 5478  
mbosveld@nuvistarealty.ca

