

the Chestnut

1549
sq. ft.



For more information call
MICHAEL BOSVELD
519 438 5478
mbosveld@nuvistarealty.ca

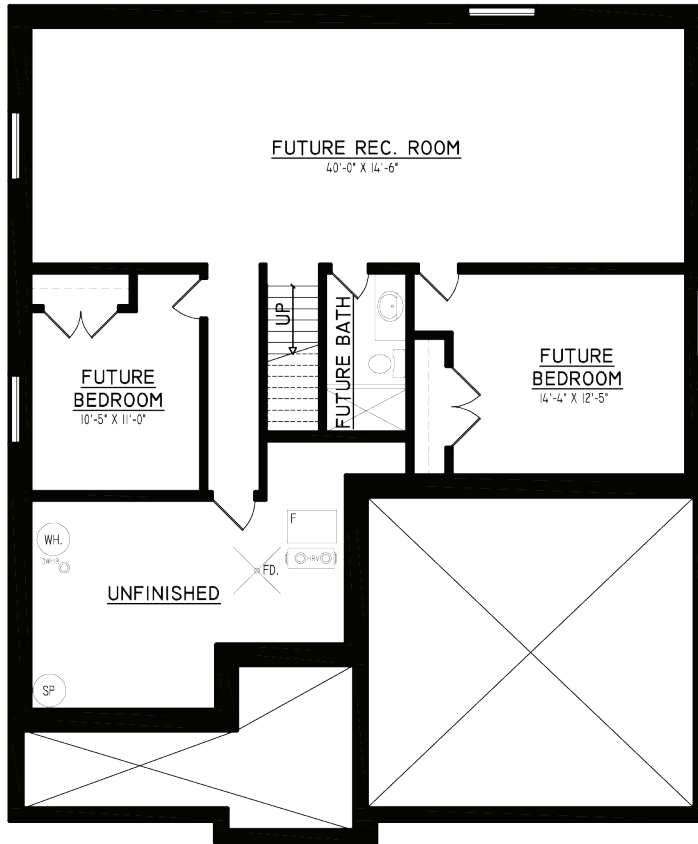


PREMIERE REALTY INC., BROKERAGE

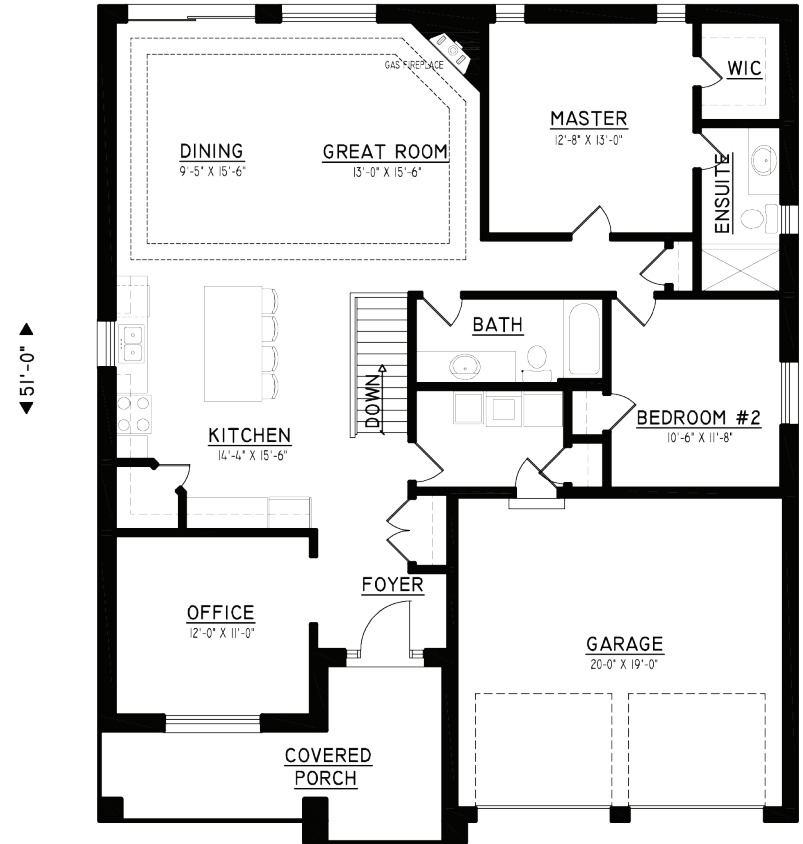


the Chestnut

1549
sq. ft.



BASEMENT PLAN



MAIN FLOOR PLAN

TOTAL APPROX. - 1549 SQ. FT.

For more information call
MICHAEL BOSVELD
519 438 5478
mbosveld@nuvistarealty.ca



PREMIERE REALTY INC., BROKERAGE

