

# the Azalea

2131  
sq. ft.



For more information call  
MICHAEL BOSVELD  
519 438 5478  
mbosveld@nuvistarealty.ca

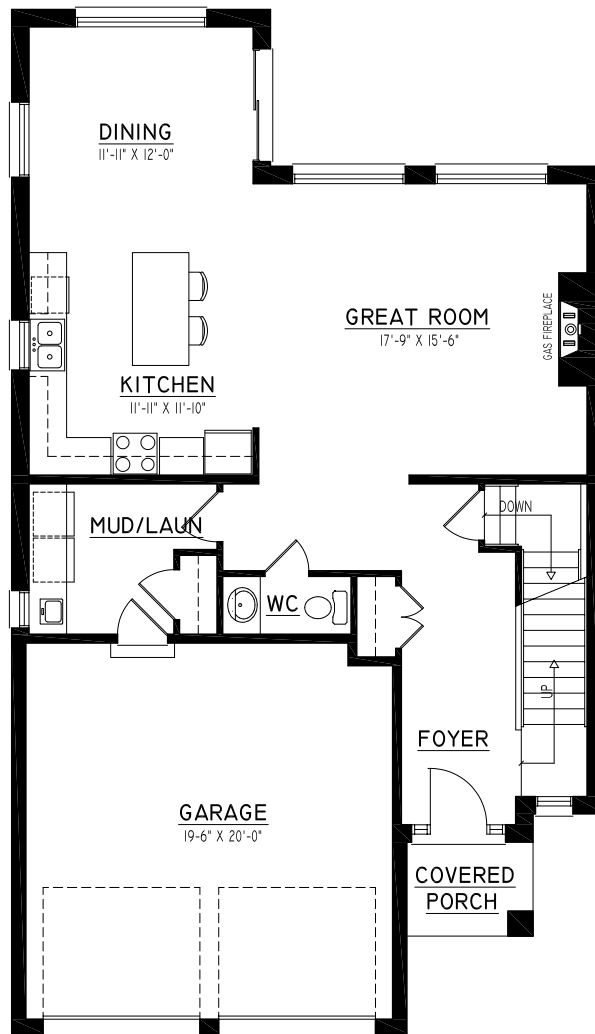


PREMIERE REALTY INC., BROKERAGE



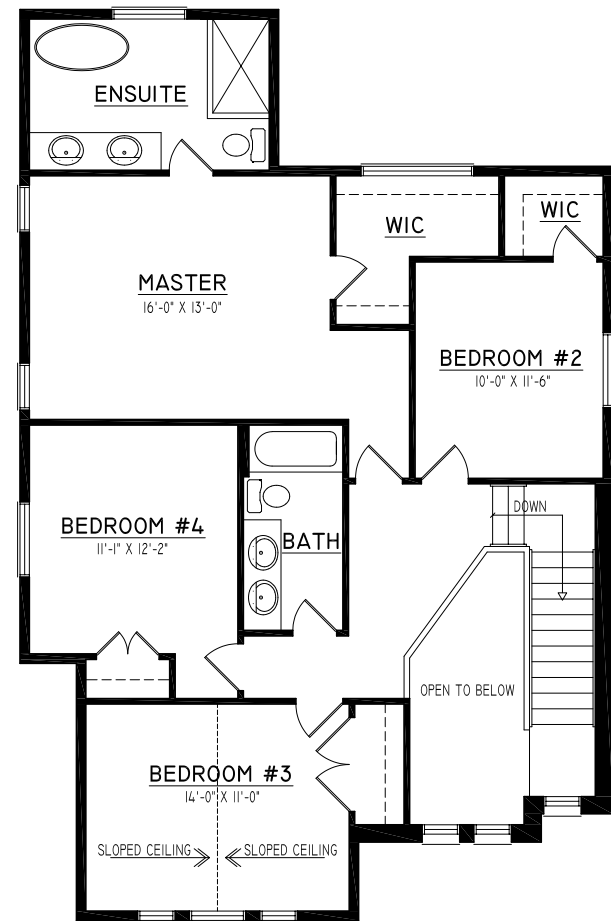
# the Azalea

2131  
sq. ft.



◀ 31'-6" ▶

**MAIN FLOOR PLAN**  
TOTAL APPROX. - 1029 SQ. FT.



**SECOND FLOOR PLAN**  
TOTAL APPROX. - 1102 SQ. FT.

For more information call  
MICHAEL BOSVELD  
519 438 5478  
mbosveld@nuvistarealty.ca



PREMIERE REALTY INC., BROKERAGE

